

**ONYX Production House RIP TIPS**  
**Importing Profile & Setting Ink Limits/Ink Restrictions (ONYX XT/6.0/6.5)**

These instructions address to correct ink limits/restrictions of ONYX media profiles. As an example this bulletin will address the *Kodak RapidDryPhotoStn190.OML* 1) How to import OML file into the ONYX Production House/XT RIP for the purpose of supporting the new media on printer platforms like the Kodak 1200i Wide-Format Printing System or the NovaJet 1000i. 2) The instructions outline critical ink limits and ink restrictions that must be set to avoid 'over inking' the media (corrects excessive media saturation, color bleed or ink running down media, etc.). For additional support please contact ONYX support directly. To obtain the most recent ONYX supported media profiles please click on the link: <http://www.encad.com/Support/RIP-Support/onyx.asp>



**Kodak** 1200i wide-format printing system



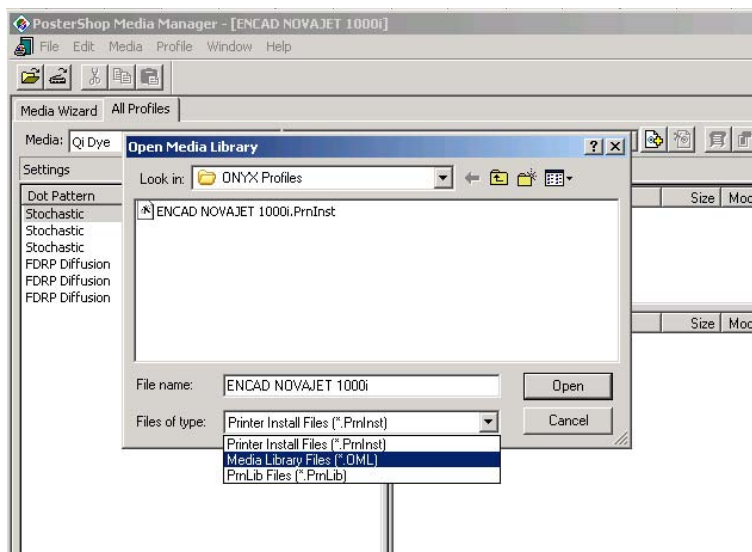
**NovaJet**1000i

**Importing an ONYX Profile**

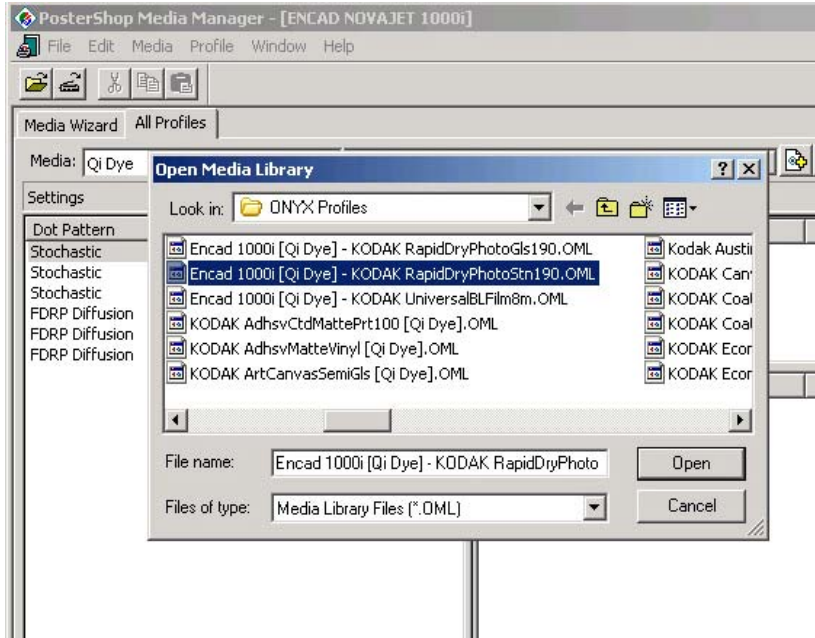
*(i.e. Kodak RapidDryPhotoStn190.OML file):*

**Step 1:** Open up the **PosterShop** program. If the *Kodak RapidDryPhotoStn190* profile is already loaded proceed to step 4. At top of navigation bar, select **Media Manager** (plugin must be active/enabled – comes standard with ONYX Production House and XT packages). With the **All Profiles** tab selected and appropriate ink type displayed (i.e. Qi Dye), select **Media – Import**. From the 'Files of Type' drop down arrow, select **Media Library Files (\*.OML)**.

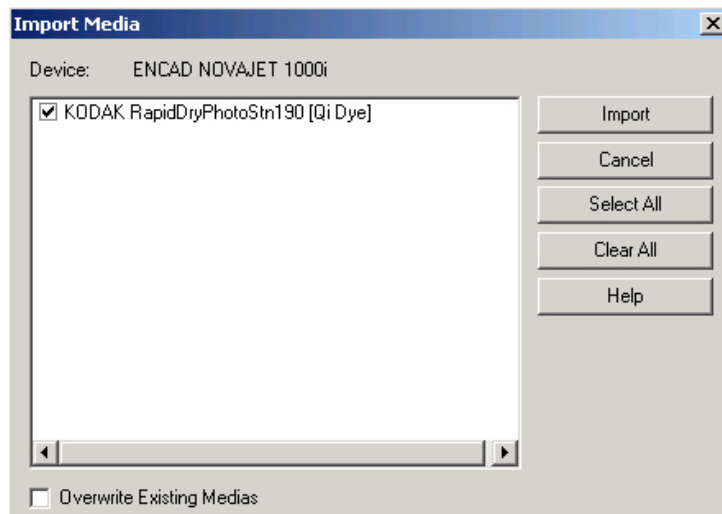
**NOTE:** For RIP Center customers an updated **ENCAD NJ1000i.PrnInst** file (or Kodak 1200i.PrnInst file) will need to be downloaded from ENCAD or ONYX's website. Close all ONYX programs then double click on the .PrnInst file to load new profiles and settings.



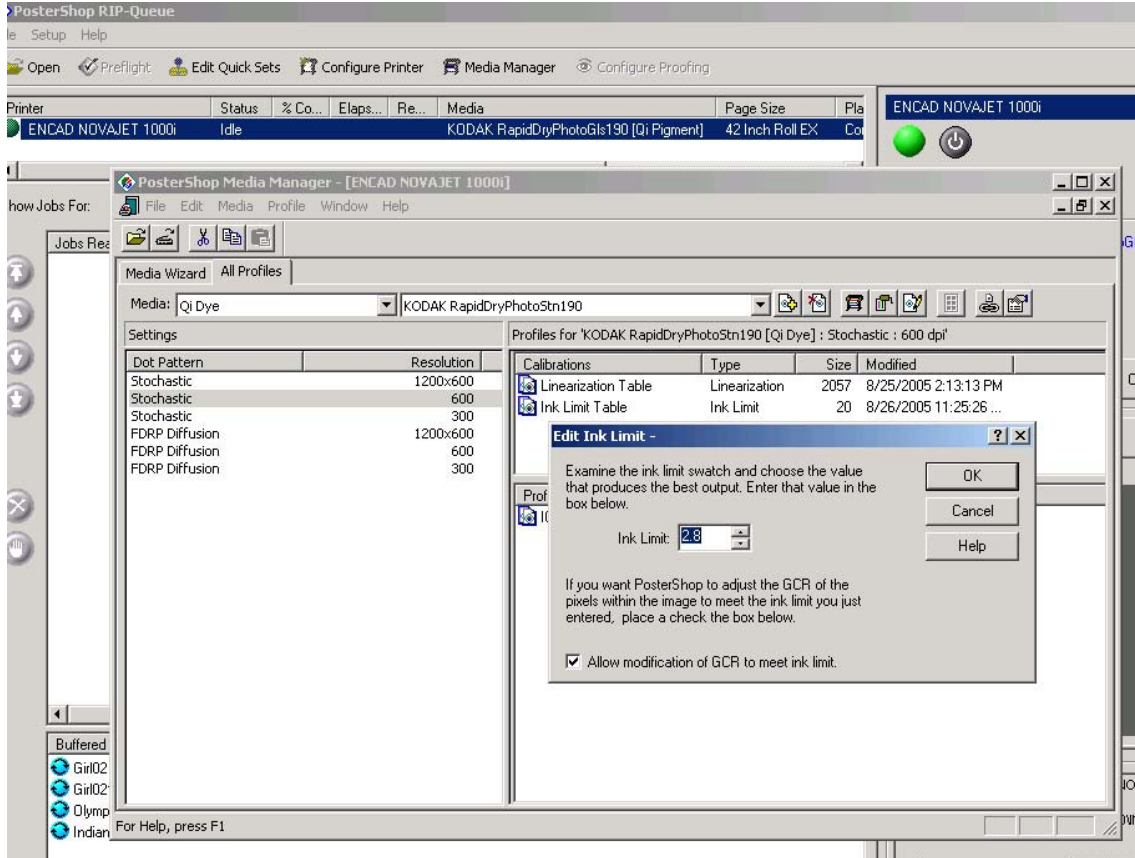
**Step 2:** At **All Profiles** tab selected, ensure appropriate ink type is displayed (i.e. **Qi Dye**) and then select the **file to import** (files may be obtained from the Encad technical support site at the following link: <http://www.encad.com/Support/RIP-Support/onyx.asp>)



**Step 3:** After opening the appropriate .OML file, select the check box and select Import. The media profile import is complete.

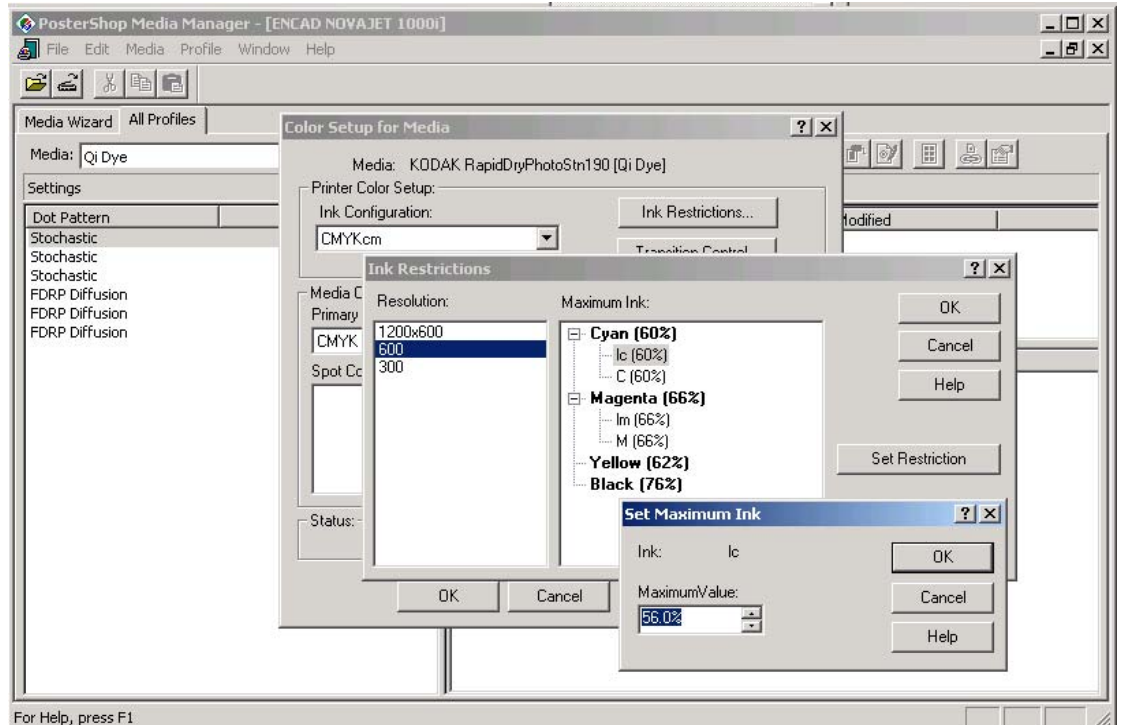


**Step 4:** Set the **Kodak RapidDryPhotoStn190.OML** ink limit to desired value (default is 4.0). At **Media Manager – All Profiles**, select **Qi-Dye ink** and **Kodak RapidDryPhotoStn190** from the drop down. Select **Stochastic 600**. Select the **Ink Limit Table** in the lower dialog pane, right click and choose **Tweak**. Change ink limit values in small increments, i.e. **3.8**.



**Step 5:** Verify **Kodak RapidDryPhotoStn190.OML** ink restrictions are correct. At **Media Manager – All Profiles**, ensure the following selections are still displayed (**Qi-Dye ink, Kodak RapidDryPhotoStn190** and **Stochastic 600 (dpi)**). Select **Media – Colors** from the drop down list. Select proper **Ink Configuration (typically CMYKcm)**. Select **Ink Restrictions** button. Select Resolution of **600**. At the **Maximum Ink** window click on the **+** signs to expand colors viewed. Only change the **ink restrictions** as necessary (if a test swatch has been printed and over-saturation of one color is observed):

Lc = 60  
 C = 60  
 Lm = 66  
 M = 66  
 Y = 62  
 K = 76



This concludes the profile import, ink limit and ink restriction adjustments to the **Kodak RapidDryPhotoStn190 media**.

**ADDITIONAL NOTES:**

**1.** For customers who wish to perform profile tweaking (re-linearization) of an existing profile (to support either an existing Kodak media or to support a non-Kodak/non-supported media application) they should obtain the **MEDIA MANAGER** plug-in from ONYX. A charge will be applied for this software upgrade if not currently enabled/available.

In addition, A spectro-densitometer (color measurement tool) or similar will be required to perform any profile building/swatch measurements. Contact your reseller for assistance.

**2.** For best color output only use Kodak approved media and ensure the correct media profile with proper ink limit/ink restrictions are selected for each processed job.

