



PDF Printing & File Rotation WINDOWS Drivers

To obtain the latest AutoCAD/Windows driver click here:

<http://www.encad.com/Support/Printer%20Reference/T200.asp>

The actual Portrait/Landscape radio buttons have absolutely no effect on the orientation of image as it is printed, but the image can be rotated through the Custom Page Size Settings. Set the Custom Page Size to .5 inches (or 13mm) larger than the image size for both the Length and Width.

To print a PDF file from the Windows Driver:

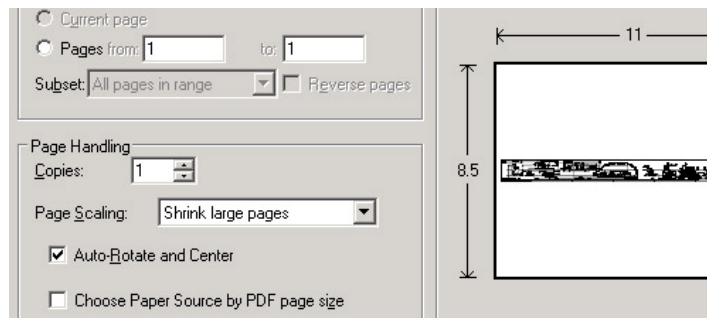
From Adobe Acrobat or Acrobat Reader:

Go to File - Print and use the following settings:

In Acrobat Reader:

Set Page Scaling to None

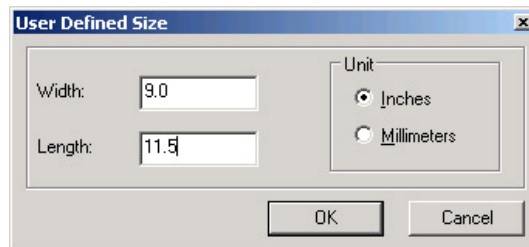
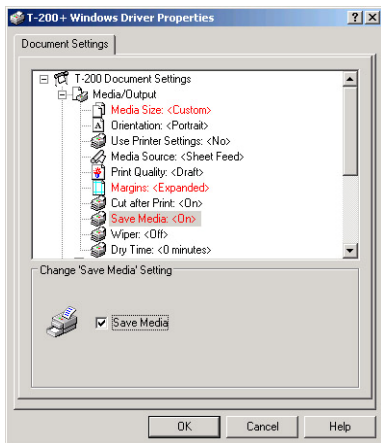
Place a check next to AutoRotate & Center



In the Windows Driver (accessed by clicking the Properties button)

Set the Custom Page Size to .5 inches (or 13mm) larger than the image size for both the Length and Width

- Set Margins to Expanded
- Set Save Media to On



In this example the page size was changed from 8.5 x 11.0" to 9.0 x 11.5".

The Portrait / Landscape rotation is performed according to the Width setting and conforms to the LEF (Longer Edge First) and SEF (Shorter Edge First) standard in which LEF and SEF correspond to the edge along the media width.

If you want the image to print with the Longer Edge First, set the Width in the Custom Page Size setting to the larger measurement of your image size with the addition of .5 inches to accommodate the margins. Set the Length in the Custom Page Size setting to the smaller measurement of your image size with the addition of .5 inches to accommodate the margins.

If you want the image to print with the Shorter Edge First, set the Width in the Custom Page Size setting to the smaller measurement of your image size with the addition of .5 inches to accommodate the margins. Set the Length in the Custom Page Size setting to the larger measurement of your image size with the addition of .5 inches to accommodate the margins.

