



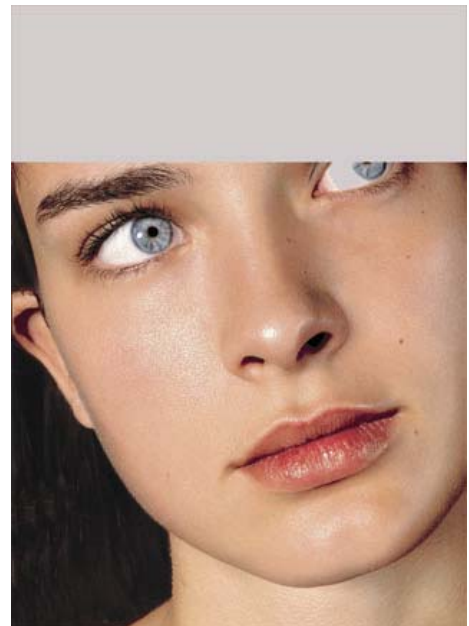
## Premature File Terminations

During normal operations the Kodak 1200i may suffer from premature file terminations, particularly affecting long plots greater than 1 meter in length. Symptoms typically include a hard 'cutoff' edge (clean termination) observed at upper end of print.

Possible Causes:

### 1. Firewall Software

To date, the majority of premature file terminations have been primarily caused by Windows XP firewall software running in a medium to high security mode setting [hinders Ethernet data transmission and sometimes prematurely terminates jobs (i.e. 60% complete) on some systems]. To disable the firewall software, select **Start - Settings - Control Panel - Administrative Tools - Services - Firewall Software** (i.e. Norton Anti-Virus-System Works/Symantec Anti-Virus/Internet Firewall/Integrity Flex) and deactivate (select stop, off, or lower security level to 0). If the firewall software cannot be disabled (due to Internet access proximity) then it is suggested to place the RIP workstation onto an isolated/local network where firewall software is not required.



### 2. Power Fluctuations

Incoming power source fluctuations can cause premature file termination (i.e. typically signified by flickering of overhead lighting several minutes prior to failure).

### 3. Insufficient Memory

Insufficient RIP workstation memory can also cause premature image file terminations; ensure a minimum of 1GB of memory (RAM) is present at primary RIP workstation. Equally, multiple/partitioned hard drives are suggested to ensure success on completing the larger tile runs.