



Kodak 1200i-NJ1000i CAD Printing Solution

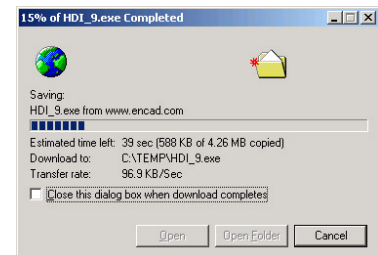
While the available HDI drivers do not directly support the Kodak 1200i-NJ1000i 6-color printer, it does support the NovaJet 700-800 series 4-color printers. When the HDI driver is set to RTL, essentially a CMYK RTL is sent to the printer. As it turns out the NJ1000i & Kodak 1200i can interpret this RTL properly. It should be understood this is a 4-color CAD printing solution only; light cyan and light magenta inks will not be printed (however all six colors will continue to spit every 30 seconds into the service station during printing operations to maintain nozzle health).

SETUP & INSTALLATION INSTRUCTIONS:

1. Create the TCP/IP port in your Printer's Folder if it has not yet been created.
2. Download the appropriate NJ700-800 series HDI driver (save to temporary folder):

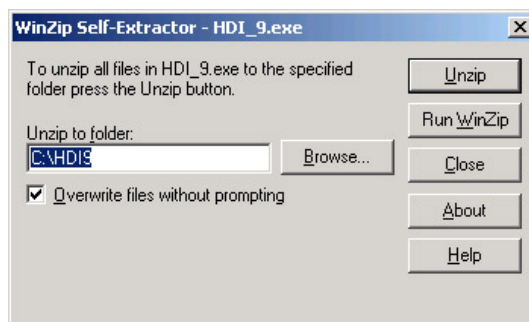
<http://www.encad.com/Support/Printer%20Reference/750.asp>

AutoCAD drivers available:

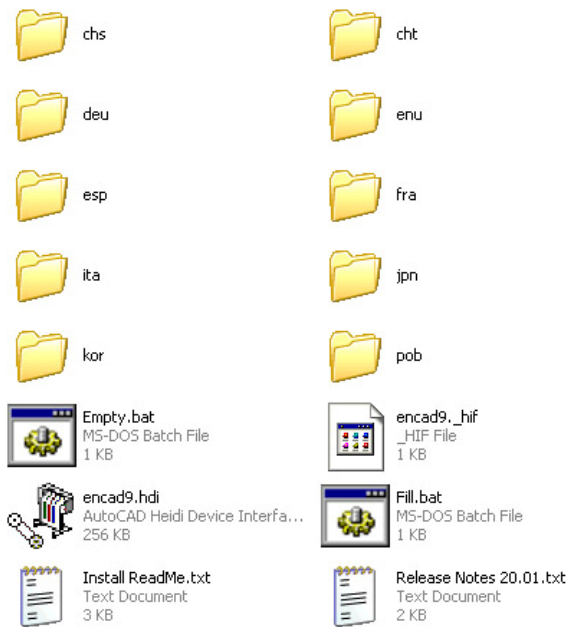


AutoCAD 12/13/14 Driver	ADI638.exe
AutoCAD 2000	HDI_618.exe
AutoCAD 2000LT	HDI_618.exe
AutoCAD 2000i	HDI_718.exe
AutoCAD 2002	HDI_718.exe
AutoCAD 2004	HDI_819.exe
AutoCAD 2005	HDI_819.exe
AutoCAD 2006	HDI_819.exe
AutoCAD 2007	HDI_9.exe

3. Unzip the distribution file as necessary and put the HDI driver files in a clean temporary directory or folder.



4. The main folder will contain subfolders for each language version. From the main folder, execute the batch file "fill.bat". This will copy files from the main folder to all of the language subfolders.



Localized languages:

- Chinese - Simplified (chs)
- Chinese - Traditional (cht)
- German (deu)
- English (enu)
- Spanish (esp)
- French (fra)
- Italian (ita)
- Japanese (jpn)
- Korean (kor)
- Portuguese-Brazil (pob)

5. Set up a 700/800 series printer in Plotter Manager:

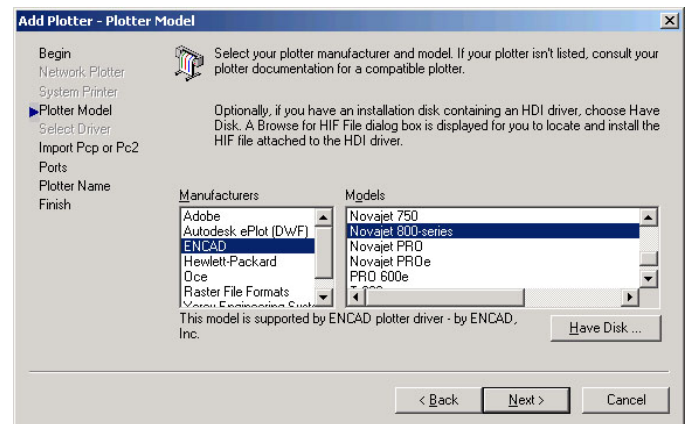
a. Start AutoCAD. Select Menu: File. Select: Plotter Manager. Or open Autodesk Plotter Manager directly if available.

b. Double click: Add-A-Plotter Wizard

c. Answer Wizard's questions until you get to the page titled "Add Plotter - Plotter Model" containing the list of manufacturers and models.

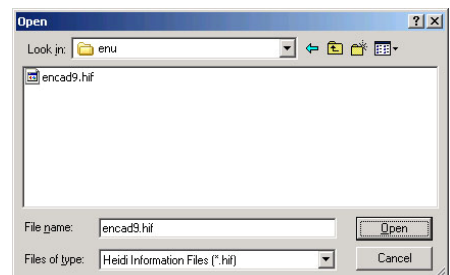
d. Press "Have Disk"

e. Locate the correct encad8.hif or encad9.hif file. Select the correct folder for your application and language:



For AutoCAD 2004, 2005, and 2006 applications:
Find the file encad8.hif in the HDI8 folder.
Look in the subfolder for your language.

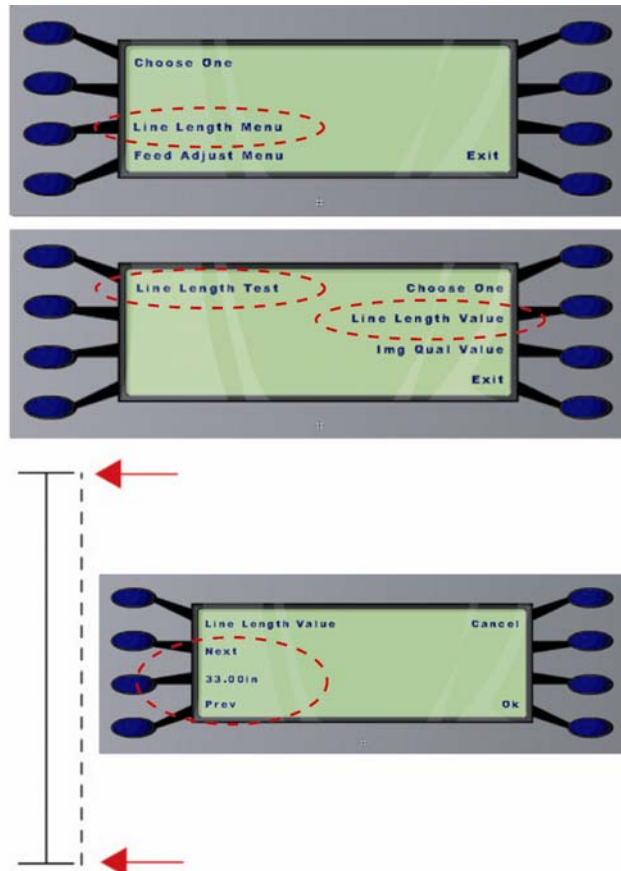
For AutoCAD 2007 applications:
Find the file encad9.hif in the HDI9 folder.
Look in the subfolder for your language.



- f. Select Manufacturer: ENCAD
 - g. Select your plotter model (NovaJet 750 or NovaJet 800 series)
 - h. Complete any additional Add-A-Plotter Wizard steps.
6. Go into Tools – Options, click on the Plotting tab.
7. From the drop down list, set the newly created pc3 file to “Use as default output device”
8. ‘Double-Click’ on the pc3 file to set the properties:
- a. Click the + sign next to Custom Properties
 - b. Set the Quality to USER DEFINED (the PRINT PASSES and CARRIAGE SPEED settings on the printer will be used)
 - c. Set the Output Format to RTL

NOTE 1: the printer’s two (2) pass print mode output is extremely fast and is the suggested CAD output printing mode. To change print pass, select **Setup Menu – Print Mode Menu – Print Passes**, select **Next** or **Previous** to change mode. Select **Ok**. If a higher print quality is desired (for graphic/bitmap fills, etc), the 3, 4 or 6 pass print modes are suggested.

NOTE 2: Printer must be calibrated in accordance with suggested printer calibration path - refer to Technical Bulletin 1, ‘**Accurate Line Length Calibration**’, section C. This procedure is critical in order to achieve correct image length accuracy printing.



9. Verify functionality; send a file to printer. Some key functions to verify:
- a. Cutter On/Off (in the pc3 settings)
 - b. Save Media (in the pc3 settings)
 - c. Rotation (Portrait / Landscape on the File – Plot screen)
 - d. Scaled to Fit (on the File – Plot screen)
 - e. Image Printed shows the colors as displayed in AutoCAD (ensure you choose an image that has CMYK)
 - f. Verify printed output's line length accuracy. Refer to step 8, NOTE 2, above.

TROUBLESHOOTING

If AutoCAD or the PC3 Plotter Configuration Editor reports errors about incompatible Heidi or HDI driver versions, do the following:

1. Go to the "DRV" folder that is under your main AutoCAD folder.
2. Remove encad driver files that do not apply:

For AutoCAD 2004, 2005, and 2006 applications:
Remove any encad6.*, encad7.* or encad9.* files,
so that only encad8.* files remain.

For AutoCAD 2007 applications:
Remove any encad6.*, encad7.* or encad8.* files,
so that only encad9.* files remain.

3. If there are no encad*.* files in the "DRV" folder,
use the installation instructions above.

If you have trouble using the HELP features of the driver:

1. Go to the "HLP" folder that is under your main AutoCAD folder.
2. Remove any drv_encad.* files such as drv_encad.hlp, drv_encad.cnt, drv_encad.gid.
3. Install files into AutoCAD again using the instructions above.