



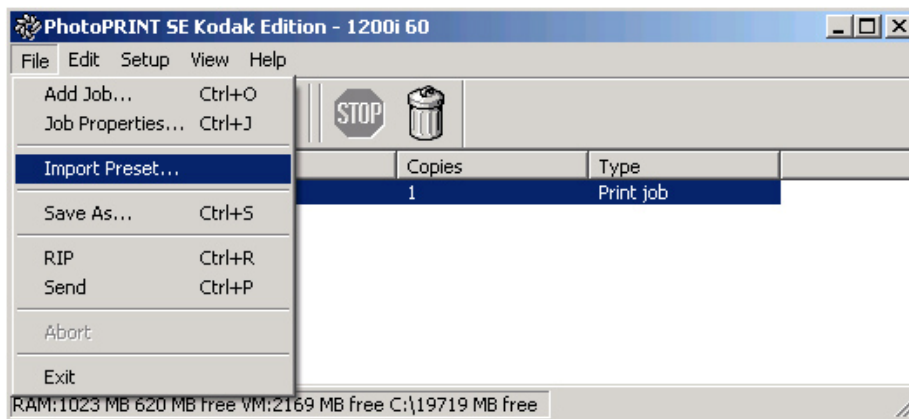
## Kodak Edition RIP – Importing PreSets

These instructions will allow importation of Presets (.ptf/.cft files), which include color profile and the ink limit/restriction tables, into the Kodak Edition RIP for the purpose of supporting new Kodak media applications. Refer to the *SUPPORT* site for additional information regarding general Kodak 1200i printer operations:

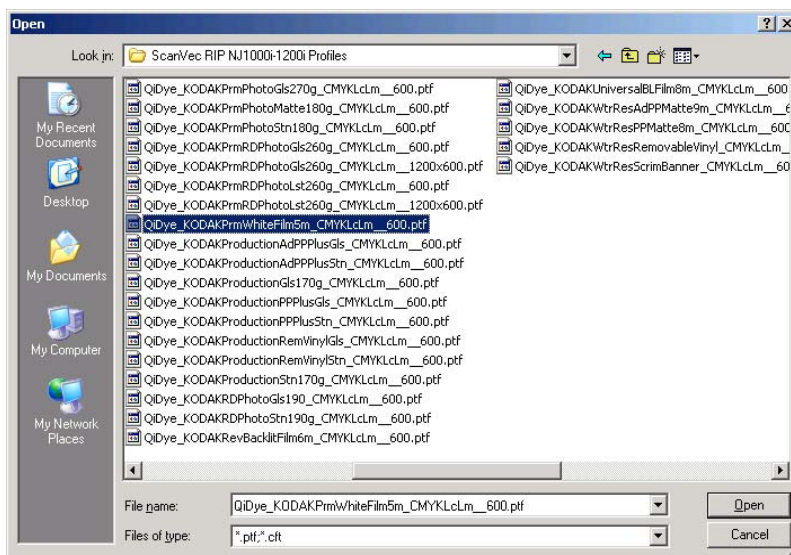
<http://www.encad.com/Support/Tech-Bulletins/index.asp>

### Importing Presets (.ptf or .cft file) Procedure:

Step 1: Select “Import Preset” under “File”.

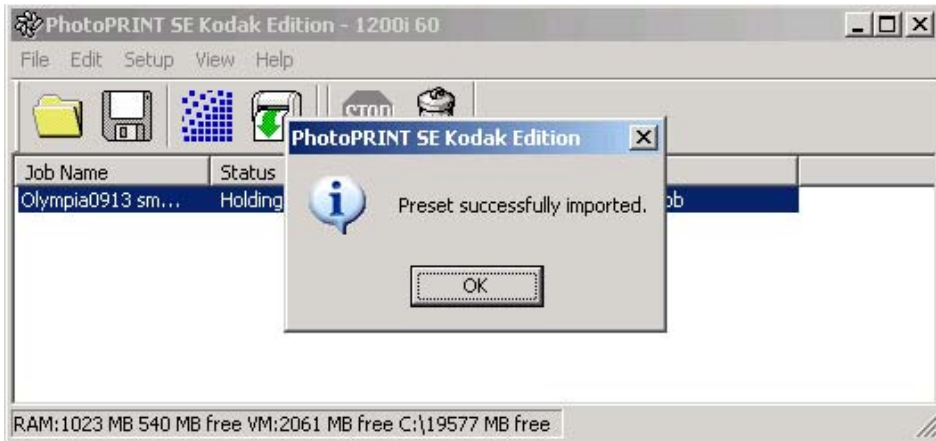


Step 2: Browse to location of the .ptf or .cft file and open it. Be sure to check for proper media name, ink type and resolution.

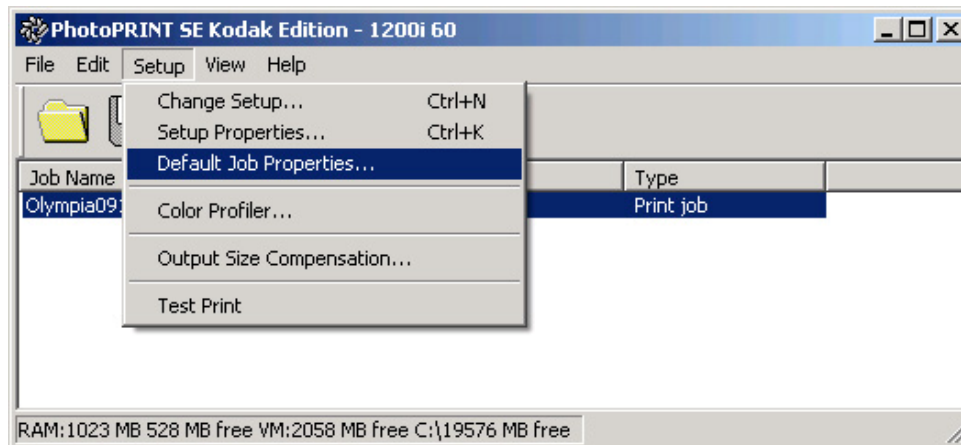


## KODAK EDITION RIP – IMPORTING PRESETS

Step 3: When complete, the following message will appear:



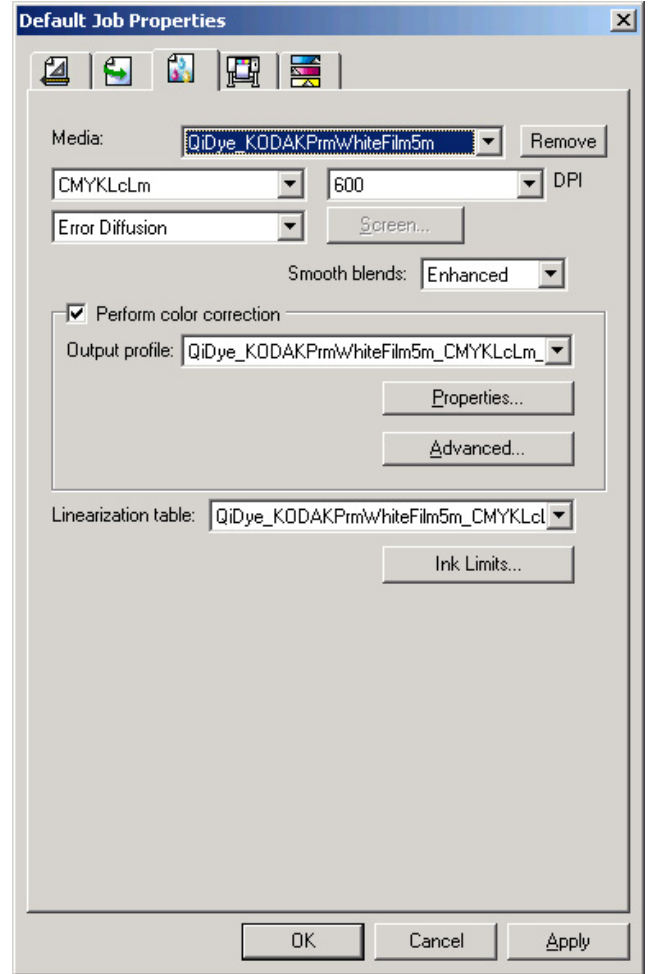
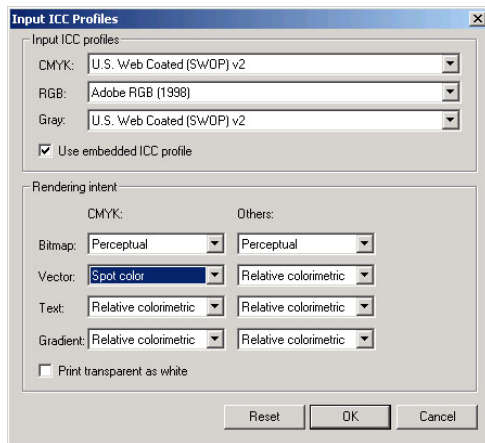
Step 4: To use the newly imported profile, select "Default Job Properties" from the "Setup" Menu. The new profile can also be selected from a dropdown list when a print file is opened (i.e. do not want new profile to be the default selection - see step 5).



## KODAK EDITION RIP – IMPORTING PRESETS

Step 5: In the setup dialogue box, choose the 3<sup>rd</sup> tab from the left, and select the new media that was imported. The media profiles will be automatically loaded, along with pre-determined print modes. These modes may be changed by the operator, but drastic changes may cause issues with ink lay down. Test should be run prior to running final prints.

**NOTE:** Changes to any of the 'Advanced' settings (i.e. Rendering intent) may improve or degrade printed output – please refer to the Quick Start guide bulletin for suggestions. Any changes to 'Ink Limits' may seriously affect overall gray color balance and is not suggested.



### ADDITIONAL NOTES:

1. For customers who wish to perform profile tweaking (re-linearization) of an existing profile (to support either an existing Kodak media or to support a non-Kodak/non-supported media application) they should obtain the *PROFILER* plug-in from Scanvec-Amiable. A charge will be applied for this software upgrade.

<http://www.scanvecamiable.com/>

In addition, A spectro-densitometer (color measurement tool) or similar will be required to perform swatch measurements. Contact your reseller for assistance.

2. For best color output only use Kodak approved media and ensure the correct media profile is selected for each processed job.

