



Routine Printer Maintenance

Perform routine maintenance at recommended plot time hours and in accordance with prescribed documentation. The printer must be cleaned and serviced routinely (i.e. weekly or bi-weekly) or print output anomalies or premature printer failures may occur during normal operations. Inkjet Printer Cleaning Kit, part number 216883-00, is available for order.



It is suggested to remove power from the printer and remove media from the printing area prior to performing routine maintenance.

<u>INTERVAL</u>	<u>COMPONENT</u>	<u>CLEANING AGENT</u>
-----------------	------------------	-----------------------

75 Plot Hours	Platen/Cutter Groove	NovaKlean™ /Distilled Water
---------------	----------------------	-----------------------------

- Apply solution to lint-free towel and thoroughly clean platen surfaces (printing area) and cutter groove bottom surface. Use a toothpick to help remove residue/debris from the cutter groove. If the cutter groove is not cleaned adequately this can lead to paper sensing errors, resulting in 'no printing' symptoms.
- Using a toothpick ensure the platen vacuum holes are free of obstructions.



<u>INTERVAL</u>	<u>COMPONENT</u>	<u>CLEANING AGENT</u>
-----------------	------------------	-----------------------

20 Plot Hours	Service Station	NovaKlean™ /Tap Water
---------------	-----------------	-----------------------

- Remove the service station by gently pulling at securing tab at right side of station. Immerse service station under warm running tap water for 1-2 minutes. Wipe residues away from wipers using solution applied to a lint-free towel. Dry service station and re-install.



NOTE: replace wipers if worn or severely bent.

INTERVAL	COMPONENT	CLEANING AGENT
20 Plot Hours/Idle >100 hrs	Cartridge Jet Area	NovaKlean™ /Distilled Water

- Apply solution to lint free towel. With caddy attached remove cartridge/caddy assembly from carriage assembly. Blot cartridge jet plate center several times, wipe away excess residues from sides of jet plate.
NOTE: Do not wipe center jet plate area. Proceed to flex driver cable cleaning prior to re-attaching cartridges.



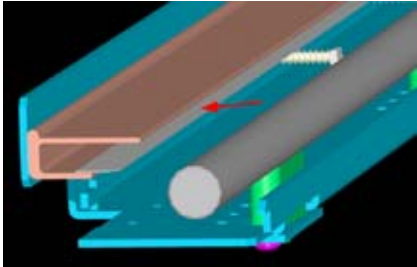
INTERVAL	COMPONENT	CLEANING AGENT
75 Plot Hours	Flex Driver Cables	NovaKlean™ /Isopropyl Alcohol

- Apply solution to lint free towel. Clean entire surface area of flex driver cable (for each cartridge stall); wipe away excess residues from cable surface.



INTERVAL	COMPONENT	CLEANING AGENT
75 Plot Hours	Encoder Strip	NovaKlean™ /Distilled Water/Isopropyl Alcohol

Apply solution to cotton swab. Thoroughly clean top and bottom surfaces of entire length of encoder strip. Perform second cleaning using isopropyl alcohol on cotton swab.
NOTE: the use of several cotton swabs will likely be necessary to ensure encoder strip is thoroughly clean. Image shift is the most common symptom attributed to a dirty encoder strip or encoder sensor.



INTERVAL	COMPONENT	CLEANING AGENT
-----------------	------------------	-----------------------

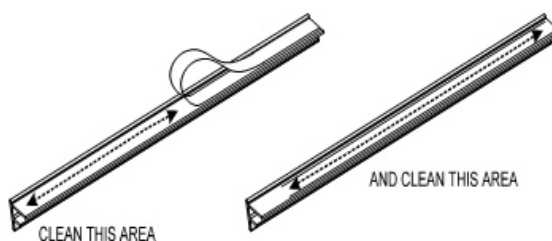
75 Plot Hours	Trailing Cable	Soapy Water only!!
---------------	----------------	--------------------

- Apply solution to lint free towel. Clean entire length of all trailing cable surfaces [ensure the upper and lower portions of cable is thoroughly cleaned; no residues (i.e. tacky surface etc.) should remain].
- Clean the top surface of the encoder stabilizer bracket at left side of printer; clean lower surface of rear cover. Wipe away excess residues from all surfaces.



CAUTION

Do not use Windex® or isopropyl alcohol on trailing cable surfaces or damage to cable will occur (removes the electrostatic protection from cable).



INTERVAL	COMPONENT	CLEANING AGENT
-----------------	------------------	-----------------------

75 Plot Hours	Slide Shaft	NovaKlean™ /Isopropyl Alcohol
---------------	-------------	-------------------------------

- Apply solution to lint-free towel and thoroughly clean entire length of slide shaft (printing area) and cutter groove bottom surface.



CAUTION

Do not lubricate the slide shaft or damage to carriage bushings will result.

INTERVAL	COMPONENT	CLEANING AGENT
-----------------	------------------	-----------------------

20 Plot Hours	Carriage Bushings	NovaKlean™ /Isopropyl Alcohol
---------------	-------------------	-------------------------------



- Apply solution to lint free towel. Clean entire surface area around the bushing. Repeat for the opposite side of carriage assembly.

NOTE: refer to Preventive Maintenance on last page of this document for additional bushing maintenance.

<u>INTERVAL</u>	<u>COMPONENT</u>	<u>CLEANING AGENT</u>
75 Plot Hours	Pinch/Lower Roller	NovaKlean™ /Distilled Water

- Apply solution to lint free towel. Clean entire surface area of upper pinch roller and remove residues on lower roller.

NOTE: if residues (i.e. vinyl adhesives) are observed on the lower rollers then power on printer, and using the Feed Media feature, select 'BACKWARD'. Thoroughly clean roller surfaces while roller is turning.

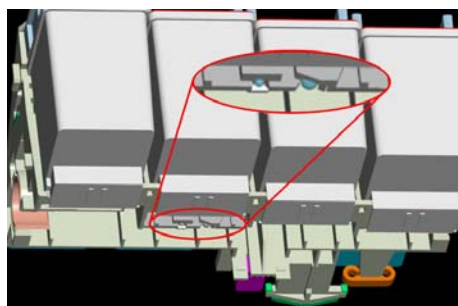


CAUTION

Do not allow cleaning towel or fingers to be pulled into printer while performing!!

<u>INTERVAL</u>	<u>COMPONENT</u>	<u>CLEANING AGENT</u>
As Required	Paper Sensor	NovaKlean™ /Isopropyl Alcohol

The *Paper Sensor* is located directly behind the right carriage assembly, magenta cartridge stall position, approximately 4 mm. Remove the Magenta cartridge. Apply solution to a cotton swab, position swab below the Magenta cartridge stall position (under flex driver cable) at an angle of approximately 30 degrees. Though the paper sensor is not visible, using the picture above as a reference, twist cotton swab against sensor surfaces (transmitter and receiver) to clean.



This illustration is a front-side angle of the underside of the right carriage assembly depicting the precise location of the carriage paper sensor.

NOTE: Alternative cleaning procedure:

Remove the service station and Magenta cartridge/caddy. Push carriage assembly partially over the service station access hole. Apply solution to a lint-free towel. Using one hand with towel maneuver lint-free towel down and underneath the carriage assembly, blot both paper sensor surfaces (located ~4 mm behind right carriage assembly's magenta flex driver cable)

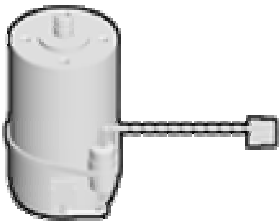


Preventive Maintenance

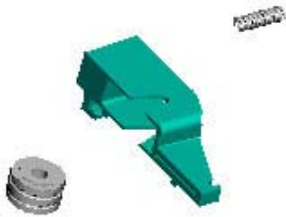
As part of Preventive Maintenance on the printer at 1000 plot hours replace the carriage bushings (2 total).

At 2000 plot hours replace the Trailing Cable, Idler, Frame Tensioner, Service Station, Servo Motor and perform a thorough cleaning on printer including the carriage paper sensor and encoder sensors.

NOTE: Only Authorized Service Personnel should perform service related actions.



Servo Motor



Idler, Frame Tensioner, Spring